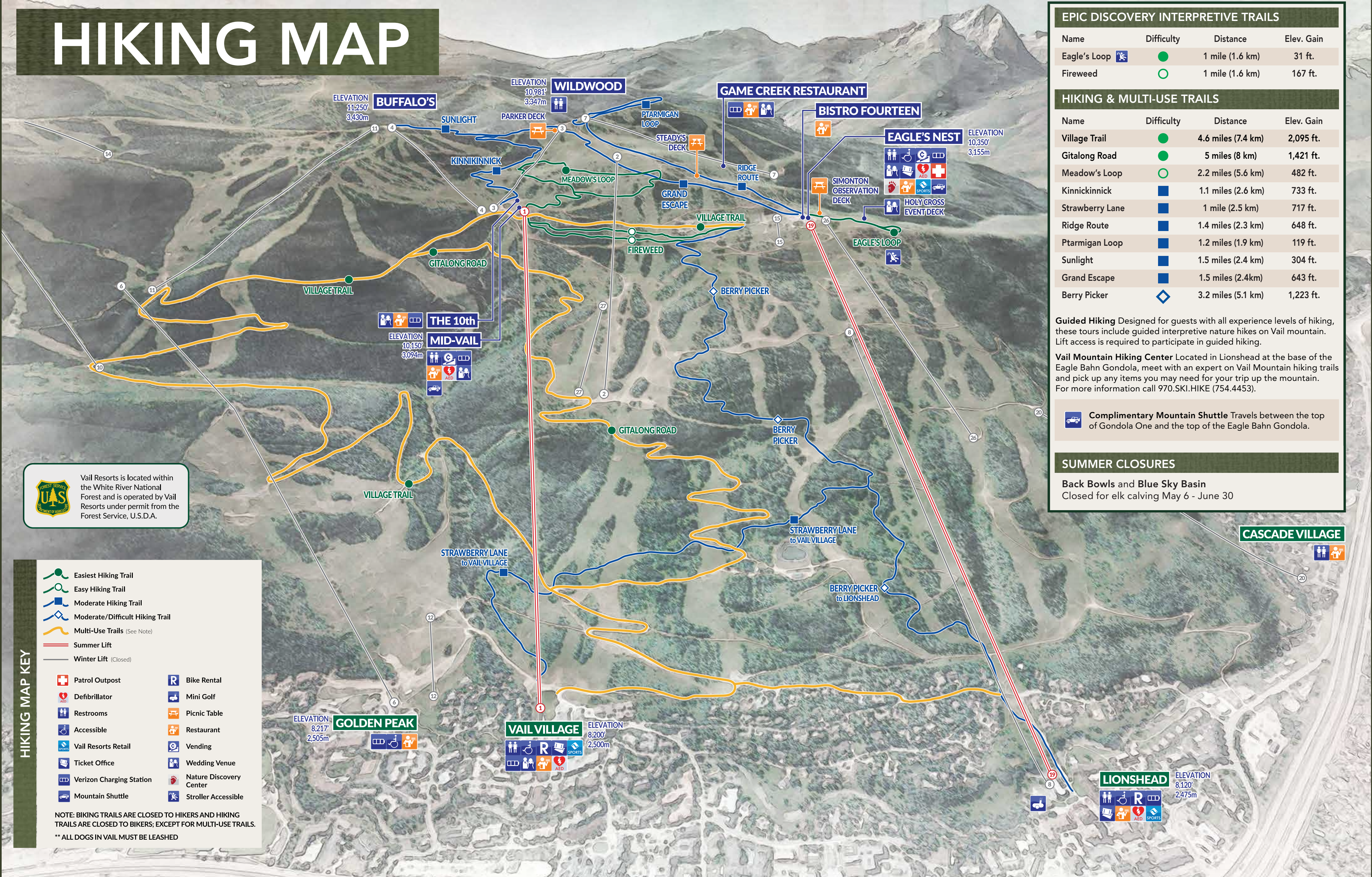


HIKING MAP



EPIC DISCOVERY INTERPRETIVE TRAILS

Name	Difficulty	Distance	Elev. Gain
Eagle's Loop	●	1 mile (1.6 km)	31 ft.
Fireweed	○	1 mile (1.6 km)	167 ft.

HIKING & MULTI-USE TRAILS

Name	Difficulty	Distance	Elev. Gain
Village Trail	●	4.6 miles (7.4 km)	2,095 ft.
Gitalong Road	●	5 miles (8 km)	1,421 ft.
Meadow's Loop	○	2.2 miles (5.6 km)	482 ft.
Kinnikinnick	■	1.1 miles (2.6 km)	733 ft.
Strawberry Lane	■	1 mile (2.5 km)	717 ft.
Ridge Route	■	1.4 miles (2.3 km)	648 ft.
Ptarmigan Loop	■	1.2 miles (1.9 km)	119 ft.
Sunlight	■	1.5 miles (2.4 km)	304 ft.
Grand Escape	■	1.5 miles (2.4km)	643 ft.
Berry Picker	◆	3.2 miles (5.1 km)	1,223 ft.

Guided Hiking Designed for guests with all experience levels of hiking, these tours include guided interpretive nature hikes on Vail mountain. Lift access is required to participate in guided hiking.

Vail Mountain Hiking Center Located in Lionshead at the base of the Eagle Bahn Gondola, meet with an expert on Vail Mountain hiking trails and pick up any items you may need for your trip up the mountain. For more information call 970.SKI.HIKE (754.4453).

Complimentary Mountain Shuttle Travels between the top of Gondola One and the top of the Eagle Bahn Gondola.

SUMMER CLOSURES

Back Bowls and Blue Sky Basin
Closed for elk calving May 6 - June 30

Vail Resorts is located within the White River National Forest and is operated by Vail Resorts under permit from the Forest Service, U.S.D.A.

HIKING MAP KEY

- Easiest Hiking Trail
- Easy Hiking Trail
- Moderate Hiking Trail
- Moderate/Difficult Hiking Trail
- Multi-Use Trails (See Note)
- Summer Lift
- Winter Lift (Closed)

Patrol Outpost	Bike Rental
Defibrillator	Mini Golf
Restrooms	Picnic Table
Accessible	Restaurant
Vail Resorts Retail	Vending
Ticket Office	Wedding Venue
Verizon Charging Station	Nature Discovery Center
Mountain Shuttle	Stroller Accessible

NOTE: BIKING TRAILS ARE CLOSED TO HIKERS AND HIKING TRAILS ARE CLOSED TO BIKERS, EXCEPT FOR MULTI-USE TRAILS.
** ALL DOGS IN VAIL MUST BE LEASHED

CASCADE VILLAGE

LIONSHEAD ELEVATION 8,120' 2,475m

VAIL VILLAGE ELEVATION 8,200' 2,500m

GOLDEN PEAK ELEVATION 8,217' 2,505m