

EPIC DISCOVERY MAP



- | | | | |
|--|----------------------------------|---|---|
| A EPIC DISCOVERY WELCOME CENTER | F NATURE DISCOVERY CENTER | G FOREST FLYER™ UA
Alpine Coaster | L HOLY CROSS ADVENTURE COURSE UA
Ropes Course |
| B EAGLE'S NEST
Dining, retail & restrooms | ANIMAL ABILITIES | H BUNGEE TRAMPOLINE UA LE
Rebound Trampoline | M LITTLE EAGLE ZIPLINE LE |
| C ADVENTURE RIDGE PAVILLION
Activity sales and starting point for Pine Cone Adventure Course, Little Eagle Zipline and Game Creek Aerial Adventure | STORY STAKE | I MOUNTAIN GOAT CLIMBING TOWER UA LE | N GOLDEN EAGLE ZIPLINE UA |
| D OUTPOST
Starting point for Eagle's Nest Tubing and Golden Eagle Zipline | VIEW FINDER | J GORE RANGE ADVENTURE COURSE UA
Ropes Course | O EAGLE'S NEST TUBING UA |
| E SIMONTON OBSERVATION DECK | RESTROOMS | K PINE CONE ADVENTURE COURSE LE
Ropes Course | P MARMOT MINI TUBING LE |
| | RESTAURANT | Q GAME CREEK AERIAL ADVENTURE UA
Canopy Tour | |
| | RETAIL | | |
| | | UA ULTIMATE ADVENTURE PASS | LE LITTLE EXPLORER PASS |

EAGLE'S NEST



ONE PASS. UNLIMITED ALL-DAY ADVENTURE.

ULTIMATE ADVENTURE PASS

Best value! The Ultimate Adventure Pass provides unlimited all-day access to an array of thrilling activities, including the Forest Flyer™ alpine coaster! Ideal for adults and kids alike, this pass includes a FREE companion ride-along ticket for the Forest Flyer™ (so parents can join their kids if they can't ride alone) and a Scenic Gondola Ride up the mountain to reach Epic Discovery.

UA The Ultimate Adventure Pass Includes: Golden Eagle Zipline, Gore Range Adventure Course, Holy Cross Adventure Course, Eagle's Nest Tubing, Forest Flyer™, Mountain Goat Climbing Tower, Bungee Trampoline, Little Eagle Zipline, Pine Cone Adventure Course, Marmot Mini Tubing, Scenic Gondola Ride. Note: For some activities, age, weight and/or height restrictions apply; see the specific activity for full details.

LITTLE EXPLORER PASS

The Little Explorer Pass, designed for our smallest guests, provides an introductory Epic Discovery experience. This pass includes a Scenic Gondola Ride up the mountain to reach Epic Discovery. (Note: This pass does not include access to the Forest Flyer™ mountain coaster.)

LE The Little Explorer Pass Includes: Mountain Goat Climbing Tower, Bungee Trampoline, Little Eagle Zipline, Pine Cone Adventure Course, Marmot Mini Tubing, Scenic Gondola Ticket. Note: For some activities, age and/or height restrictions apply; see the specific activity for full details.

GET YOUR PASS AT THE TICKET OFFICE OR VAIL.COM

Visit Vail Village or Lionshead Ticket Office or purchase on vail.com. Pass information is subject to change so visit vail.com/epicdiscovery or call 970.SKI.VAIL (754.8245) for the most up-to-date pass pricing and height/weight/age requirements.



PASS ACTIVITIES

ADVENTURE COURSES

Put your strength and balance to the test as you explore challenging obstacles via ropes, bridges, logs and balance elements.

UA Gore Range **UA Holy Cross** 52", 45-250 lbs. **LE Pine Cone** 30-100 lbs., age 3+

TUBING HILLS

Grab a tube, hop a lift, get a rush. Glide down the mountain on an adrenaline-fueled ride for both adventurers young and old.

UA Eagle's Nest 42", age 7+ **LE Marmot Mini** 30-100 lbs., age 3+

ZIPLINES

Soar, zip and swoosh to new heights. Take in the sights and sounds of the beautiful Rocky Mountains as you zip through the air.

UA Golden Eagle 45-80", 55-275 lbs., age 8+ **LE Little Eagle** 30-100 lbs., age 3+

FOREST FLYER™

Speed is your friend as you fly through the forest on a raised alpine coaster.

Driver: 54" Driver with Passenger: 54", age 16+

Passenger: 38"-54", age 3+ Combined (driver and passenger): max. weight 330 lbs.

MOUNTAIN GOAT CLIMBING TOWER

Harness your inner adventure while scrambling up to new heights on the 25-ft climbing wall. 45-250 lbs., age 3+

BUNGEE TRAMPOLINE

Soar skyward on a super-bouncy trampoline, all while safely harnessed to a series of bungee cords. 30-180 lbs., age 3+

All activities require enclosed footwear and proper harness fit (if required).

All activities require a signed release of liability before participating. Minors under age 18 must have a parent or guardian present. All activities have equipment and safety systems in place per the activity manufacturer based on guests of average height and weight. Guests who have certain conditions such as heart, back or neck conditions, pregnant women, guests who have had recent surgery or guests with casts, braces, restrictive devices or certain disabilities or other impairments are prohibited from participating in activities. If a guest is uncertain or concerned about their health or pre-existing condition, they should abstain from participating in an activity.



STORY STAKES

How many feathers does a golden eagle have? How can you tell pinecones apart? What is a paintbrush flower and who benefits from them? How does a red fox compare to other members of the canine family? Find these answers and more as you learn about the White River National Forest and its flora, fauna and animals from the story stakes scattered around Vail Mountain.

MOUNTAIN VIEW FINDERS

What did Vail Mountain founders Earl Eaton and Pete Seibert see when they first looked across the undeveloped land? Where did they stand and how did they dream up the beautiful resort we see today? Take in the history of the White River National Forest and appreciate the views.

ANIMAL ABILITY EXPERIENCES

Can you balance like a bighorn sheep or leap as high as a mountain lion? Can you stride as long as a moose or can you burrow like a marmot? Can you hear as well as a mule deer or see like a red-tailed hawk? Experience what it's like to have the abilities of the animals that inhabit Vail Mountain while enjoying the scenic hiking trails around Adventure Ridge.



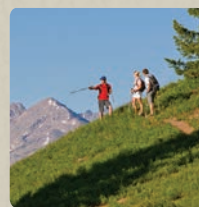
Visit the Nature Discovery Center to explore local ecology and find out about free daily nature talks and guided hikes.

OTHER ACTIVITIES



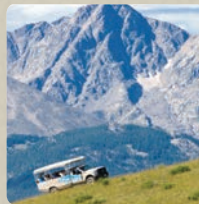
BIKE CLINICS

Designed for our guests with less experience on a mountain bike, this tour includes some basic instruction and a guide to help you explore Vail Mountain. Visit vail.com for clinic details.



GUIDED HIKING

Guided hikes on Vail Mountain are offered daily during summer operations and customizable to your hiking preference. Visit the Vail Hiking Center at the base of the Eagle Bahn Gondola for tour details or call 970.SKI.HIKE (754.4453)



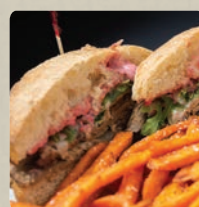
MOUNTAIN TOP TOURS

Experience a scenic tour across Vail Mountain in an open-air vehicle.

MINI GOLF

Putt-putt fun at the base of Lionshead.

FUEL YOURSELF FOR ADVENTURE



BBQ ON VAIL MOUNTAIN

Enjoy smoked BBQ above 10,000ft at Talon's Grill located at the top of the Eagle Bahn Gondola or Sarge's Grill, located at the top of Gondola One.



BISTRO FOURTEEN

With views of Mt. Holy Cross, there is no better spot for a family friendly lunch or dinner. Located at Eagle's Nest, steps from Epic Discovery activities. vail.com | 970.754.4530



GAME CREEK RESTAURANT

Enjoy a secluded dining experience at the coveted Game Creek Restaurant for dinner or Sunday brunch. Located in Game Creek Bowl. GameCreekVail.com | 970.754.4275

THE 10TH

Relish in alpine inspired cuisine, as superb as the views at the top of Gondola One for lunch. The10thVail.com | 970.754.1010



ADEQUATE CLOTHING

Be sure to wear fully enclosed footwear, no heel straps, rain jacket, and bring adequate layers.



HEALTH AND SAFETY

Most activities have height, weight and age requirements and may require guests be able to walk without assistance; please check with the Ticket Office for detailed information. Expectant mothers, those with heart, back or neck issues may not participate. Children under the age of 18 must be accompanied by a parent or guardian.



WATER

Stay hydrated, drink plenty of water.



LIGHTNING/THUNDERSTORMS

Lifts and activities may close on occasion due to inclement weather, causing delays.



TEMPERATURE DIFFERENCE

Temperature tends to be 10 degrees cooler at the top. Be prepared!



SUN PROTECTION

Bring sunscreen with a 15+ protection factor. Sun at higher elevations is much stronger.

GAME CREEK AERIAL ADVENTURE +

Experience the Game Creek Aerial Adventure, which also includes all-day access to the Ultimate Adventure Pass. Fly through and above the forest habitat with an array of seven ziplines and aerial bridges. Learn about the mountain ecosystem while working your way through each course's challenges. Experience nearly 2 miles of ziplining over the course of a 3-4 hour tour.

Enclosed footwear required. 75-250 lbs., age 10+ (ages 10-13 require accompanying adult)

Reservations required. Call 970.SKI.VAIL (754.8245) or visit vail.com/epicdiscovery



MOUNTAIN SAFETY

IN CASE OF AN ACCIDENT OR IF YOU GET LOST Call 970.754.9111

from a cell phone. Wait for someone to answer and do not hang up until all pertinent information has been gathered.

Fire Danger. Smoking is prohibited on lifts and is only allowed in designated smoking areas. Report fires immediately via cell by calling 970.754.3049.

Sun Protection. With every 3,000' increase in altitude, UV levels rise by 10% -12%. We recommend Smith Optics eye protection and Supergoop! Broad Spectrum sunscreen products to ensure protection from UV rays.

Protect your Purchase. Your ticket or pass is non-transferable and may not be resold or used by anyone other than the person to whom it was issued. Report lost or stolen passes to resort staff or law enforcement immediately. Resort staff may ask you to show your pass or ticket at any time. Failure to show a valid pass or ticket or engaging in fraudulent behavior of any kind may result in loss of resort privileges or criminal prosecution.

Marijuana Consumption. It is illegal to consume marijuana in public and is not permitted on any Vail Resorts property.

Aerial Drones. Recreational drone use by any guest or member of the public, for any reason, is not permitted on or over any Vail Resorts property.

Lightning and Thunderstorms. Afternoon thunderstorms are common in the mountains. Take proper precautions when you see or hear a storm developing: Seek shelter, keep off ridgelines, and stay clear of chairlift houses, lift towers, power lines, open spaces, lone trees and signposts. Lifts may close on occasion, causing delays.

High-Altitude Environment. If you live at a lower elevation, you may tire more easily. Take it easy at first, plan short trips until you are acclimated and drink plenty of water. Some visitors may experience symptoms associated with Vail's high altitude. Symptoms may include headaches, nausea, and dizziness, loss of appetite, restless sleep, coughing and difficulty in breathing. If symptoms persist or if you have a concern about your health, you should seek medical attention.

Adequate Clothing. Be aware, mountain weather changes quickly and there is usually at least a 10-degree temperature difference from the bottom to the top of the lifts. Bring a raincoat and consider a sweater or fleece.

Lift Safety. Under Colorado law, you cannot board a lift unless you have sufficient physical dexterity, ability and knowledge to negotiate or to use such lift safely or until you have asked for and received information sufficient to enable you to use the lift safely. You may not use a lift when under the influence of drugs or alcohol. Please lower the bar when riding lifts.

Weather and Terrain. YOU ASSUME THE RISK of unpredictable weather, as well as rugged, uneven, irregular and slippery conditions.

Multi-Use. Be aware that trails and roads on Vail Mountain are used for many purposes during the summer. Mountain bikes, hikers, motorized vehicles, construction equipment and others may be encountered at any time.

Construction Warning. You may encounter construction equipment, maintenance vehicles or other heavy machinery at any time. Always be cautious and obey posted signs and warnings.

Wildlife. Do not litter or feed wildlife. Hikers rarely encounter bears but, if you do, please remain calm and back away slowly. Vail asks that everyone is cautious and respectful of wildlife.

TOGETHER WE'RE BETTER



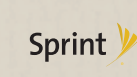
Official Vehicle



Official Soft Drink



Official Beer



Official Communications Provider



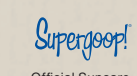
Official Uniform



Official Card



Official Snack



Official Sunscreen



Official Camera



Official Rental Car



Official Footwear



Official Coffee



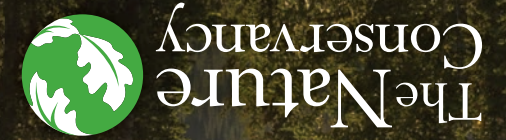
Official Sock



Official Helmet, Goggles and Sunglasses



Official Wine & Sparkling



IN PARTNERSHIP WITH

1% FOR THE FOREST

NATURAL COMMITMENT



2016 SUMMER ADVENTURE GUIDE

VAIL MOUNTAIN | [VAIL.COM](http://vail.com)

GONDOLA SCHEDULE

Enjoy a Scenic Gondola Ride with purchase of any activity pass. Scenic ride tickets are also available for purchase. Ticket offices in Vail Village and Lionshead open 30 minutes prior to gondola operation.

Ask about **Lift and Lunch** for a discounted mountain dining credit.

Gondola One is located in Vail Village.

Eagle Bahn Gondola is located in Lionshead.



970.SKI.VAIL (754.8245) | vail.com

JUNE

S	M	T	W	TH	F	S
			1	2	3	4
5	6	7	8	9	10	11
12	13	14	15	16	17	18
19	20	21	22	23	24	25
26	27	28	29	30		

JULY

S	M	T	W	TH	F	S
					1	2
3	4	5	6	7	8	9
10	11	12	13	14	15	16
17	18	19	20	21	22	23
24	25	26	27	28	29	30
31						

AUGUST

S	M	T	W	TH	F	S
	1	2	3	4	5	6
7	8	9	10	11	12	13
14	15	16	17	18	19	20
21	22	23	24	25	26	27
28	29	30	31			

SEPTEMBER

S	M	T	W	TH	F	S
			1	2	3	
4	5	6	7	8	9	10
11	12	13	14	15	16	17
18	19	20	21	22	23	24
25	26	27	28	29	30	

OCTOBER

S	M	T	W	TH	F	S
						1
2	3	4	5	6	7	8

EARLY SEASON SCHEDULE

Eagle Bahn Gondola: 9:30am-6pm
June 10-22
Gondola One: 9:30am-4pm
June 3-5, 10-22

DAYTIME SCHEDULE

Eagle Bahn Gondola: 9:30am-6pm
Gondola One: 9:30am-4pm
June 26-Sept. 4, Sunday-Wednesday

DAYTIME AND EVENING SCHEDULE

Eagle Bahn Gondola: 9:30am-9pm
Gondola One: 9:30am-4pm
June 23-Sept. 4, Thursday-Saturday

FALL SCHEDULE

Eagle Bahn Gondola: 9:30am-6pm
Gondola One: 9:30am-4pm
Sept. 5 and Sept. 9-Oct. 2, Friday-Sunday

NOT IN OPERATION

BIKES ON GONDOLA

Eagle Bahn Gondola until 6pm
Gondola One until 4pm

Calendar colors coordinate with operating schedule. All times subject to change.