

1

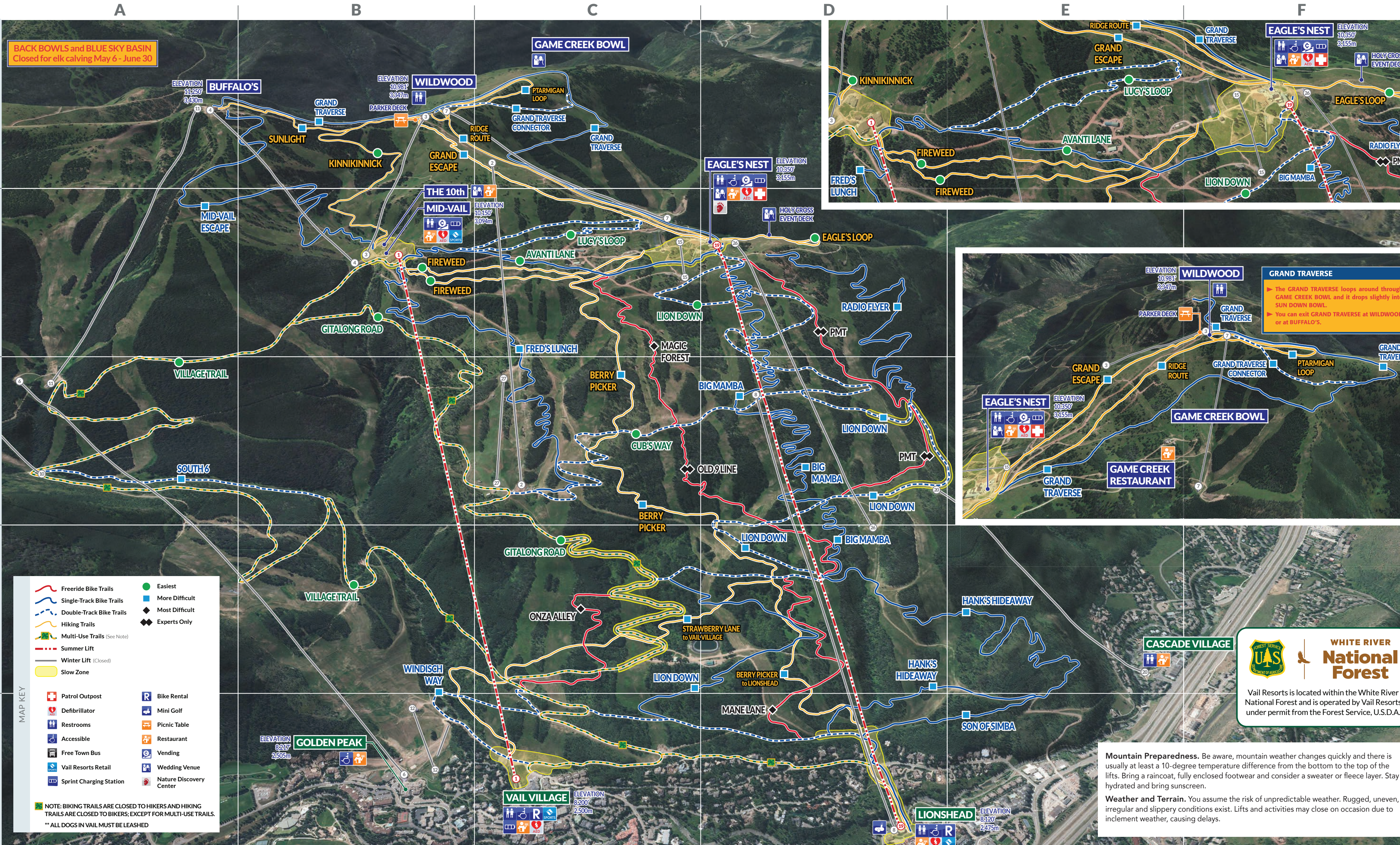
2

3

4

5

6



MAP KEY

Freeride Bike Trails

Single-Track Bike Trails

Double-Track Bike Trails

Hiking Trails

Multi-Use Trails (See Note)

Summer Lift

Winter Lift (Closed)

Slow Zone

Easiest

More Difficult

Most Difficult

Experts Only

Patrol Outpost

Defibrillator

Restrooms

Accessible

Free Town Bus

Vail Resorts Retail

Sprint Charging Station

Bike Rental

Mini Golf

Picnic Table

Restaurant

Vending

Wedding Venue

Nature Discovery Center

NOTE: BIKING TRAILS ARE CLOSED TO HIKERS AND HIKING TRAILS ARE CLOSED TO BIKERS; EXCEPT FOR MULTI-USE TRAILS.

** ALL DOGS IN VAIL MUST BE LEASHED

EPIC DISCOVERY INTERPRETIVE TRAILS

See the Epic Discovery Map for full list of interpretive elements on Vail Mountain hiking trails.

Eagle's Loop (D2) Short ridgetop loop with great views of Mount of the Holy Cross. 1 mile (1.6 km), 30–50 minutes.

Fireweed (Upper and Lower) (C2) Beautiful wooded trail between Eagle's Nest and Mid-Vail. 1 mile (1.6 km), 30–50 minutes.

HIKING TRAILS

Kinnickinnick (B1) A wooded trail connecting Ptarmigan at Wildwood and heading to Mid-Vail. 1.1 miles (2.6 km)

Berrypicker (D4) An intermediate trail winding down Vail Mountain with gorgeous views of the Gore Range and incredible wildflowers; ending up in either Vail Village or Lionshead. 3.2 miles (5.1 km) 1.5–2 hrs

Grand Escape (B1) This trail offers spectacular views of Vail Mountain, the Gore Range, and the Sawatch range. 1.5 miles (2.4 km), 45 minutes, one way. Connecting Eagle's Nest to Wildwood.

Ridge Route (B1) Intermediate ridge climb from Eagle's Nest to Wildwood and back with spectacular views. 1.4 miles (2.3 km), 1.5–2 hours one way.

Ptarmigan Loop (F3) Scenic trail through shaded woods connecting with Kinnickinnick at Wildwood to Ptarmigan Point and back. 1.2 miles (1.9 km), 30–40 minutes.

Sunlight (B1) Beautiful trail connecting Wildwood to Patrol Headquarters. 1.5 miles (2.4 km), 45 minutes, one way.

BIKING TRAILS

Village Trail (B4) A two-way dirt road navigating the eastern side of Vail Mountain between Mid-Vail and Vail Village. Beautiful views of the town and Gore Range. 4.6 miles (7.4 km)

Lucy's Loop (C2) Great way to build your skills on a beginner trail between Eagle's Nest and Mid-Vail, with great views of the Gore Range and on your way to more biking trails. 2.4 miles (3.8 km)

Cub's Way (C3) Dirt road beginner option connecting Lion Down to Gitalong Road. 1.0 miles (1.6 km)

Gitalong Road (C4) A pleasant winding dirt road from Eagle's Nest or Mid-Vail to Vail Village. 5 miles (8 km)

South 6 (A3) This double-track off Village Trail following Mill Creek is an option for intermediate bikers. 0.75 miles (1.2 km)

Hank's Hideaway (E4) A challenging, winding single-track through aspen groves with an option at the end to return to Vail Village (requires some climbing) or Lionshead. 2 miles (3.2 km)

Fred's Lunch (C2) Classic single-track mixing tight, wooded sections with open meadows that leads from Mid-Vail to lower Gitalong Road, providing spectacular views. 2.4 miles (3.8 km)

Grand Traverse (C1) Vail's signature single-track traverses the Back Bowls from Eagle's Nest, offering excellent views of Mt. of the Holy Cross. 4.9 miles (7.9 km) one way.

Lion Down (C1) Intermediate descending option from Eagle's Nest to Lionshead. This winding dirt road through aspen forests becomes single- and double-track at Gitalong Road. 6 miles (9.7 km)

Mid-Vail Escape (A2) Open single- and double-track that takes you from the top of Vail Mountain to Mid-Vail with spectacular views of the Gore Range. 2.2 miles (3.5 km)

FREERIDE BIKING TRAILS

WARNING! Freeride bike trails are not for hiking and cross-country biking. Freeride bikes, freeride equipment and pads are highly recommended for use on freeride-specific trails. These are not the same as cross-country trails. They are more technical and require the use of different equipment and skills.

Big Mamba (D3) An exhilarating combination of flowing rollers and smooth switchbacks that will take you across open meadows, into dense pine

Radio Flyer (D2) Dozens of banked turns and rollers wind from Eagle's Nest down through Vail's lodgepole pine forests. 1.75 miles (2.8 km)

Magic Forest (C2) Starting east of Eagle's Nest, this single-track winds its way through the woods with several drop-offs and challenging terrain features. 1.2 miles (1.9 km)

Mane Lane (D5) Challenging single-track with some technical elements and banked turns. 0.6 miles (1 km)

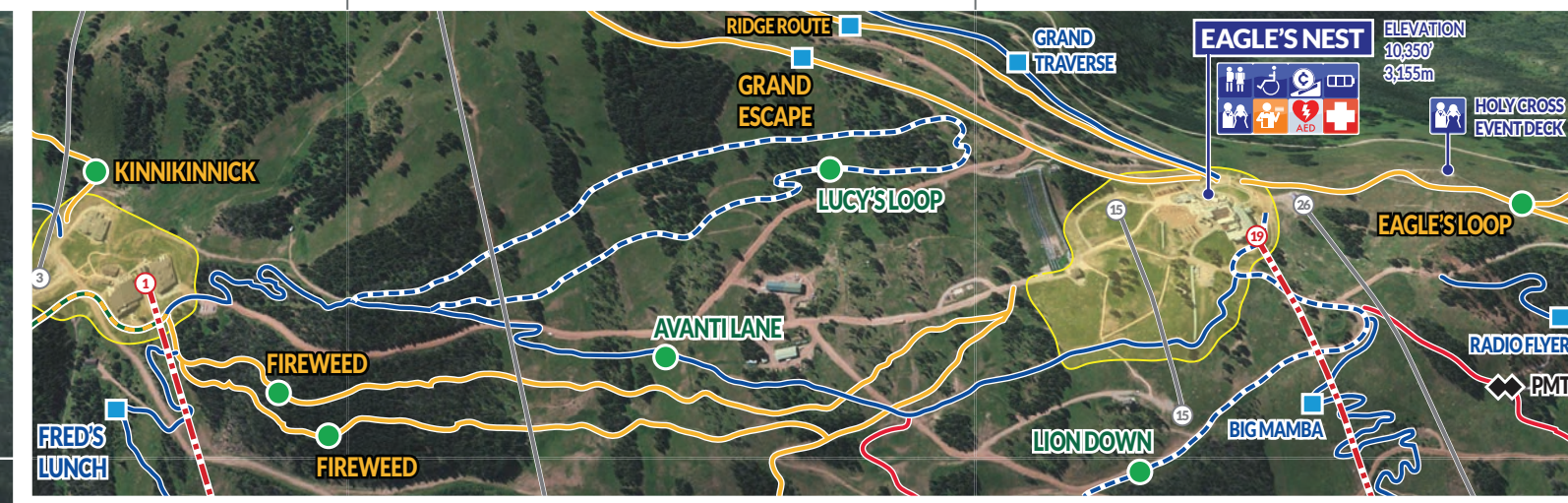
Onza Alley (C4) A difficult single-track with narrow, steep sections over roots and rocks. 0.5 miles (0.8 km)

PMT (D3) Steep, technical, and fast single-track with technical elements descending from Eagle's Nest. 1.2 miles (1.9 km)

Old 9 Line (C3) Extremely steep and technical with numerous drops and features, starting below Magic Forest. 0.75 miles (1.23 km)

Mountain Preparedness. Be aware, mountain weather changes quickly and there is usually at least a 10-degree temperature difference from the bottom to the top of the lifts. Bring a raincoat, fully enclosed footwear and consider a sweater or fleece layer. Stay hydrated and bring sunscreen.

Weather and Terrain. You assume the risk of unpredictable weather. Rugged, uneven, irregular and slippery conditions exist. Lifts and activities may close on occasion due to inclement weather, causing delays.





epicDISCOVERY

THRILL. EXPLORE. DISCOVER.

GET YOUR ACTIVITY PASS AT VAIL.COM

- DAY PASSES**
- UA Ultimate Adventure Pass** Best value! The Ultimate Adventure Pass provides unlimited all-day access to an array of thrilling activities, including the Forest Flyer™ mountain coaster! Ideal for adults and kids alike, this pass includes a FREE parent ride-along ticket for the Forest Flyer™ (so parents can join their kids if they can't ride alone) and a Scenic Gondola Ride up the mountain to reach Epic Discovery.
 - LE Little Explorer Pass** The Little Explorer Pass, designed for our smallest guests, provides an introductory Epic Discovery experience. This pass includes a Scenic Gondola Ride up the mountain to reach Epic Discovery. (Note: The pass does not include access to the Forest Flyer™ mountain coaster.)

- PASS ACTIVITIES**
- Forest Flyer™** Fly through the forest on a raised alpine coaster. **UA**
- Adventure Courses** explore challenging obstacle areas via ropes, bridges, logs and balance elements.
Gore Range **UA** Holy Cross **UA** Pine Cone **LE**
- Ziplines** Take in the beautiful views of the surrounding mountain ranges as you zip through the air. Golden Eagle **UA** Little Eagle **LE**
- Tubing Hills** Grab a tube, hop a lift, get a rush.
Eagle's Nest **UA** Marmot Mini **LE**
- Mountain Goat Climbing Tower** Harness your inner adventure and scramble to new heights **UA** **LE**
- Bungee Trampoline** Soar skyward on a super-bouncy trampoline, all while harnessed to a series of bungee cords. **UA** **LE**

- GAME CREEK AERIAL ADVENTURE** Experience the ultimate alpine adventure with an array of ziplines and aerial bridges. Enjoy all activities included in the Ultimate Adventure Pass before and after your tour.
- LEARN THROUGH PLAY**
- Story Stakes** Learn about the White River National Forest and its flora, fauna and animals from story stakes around Vail Mountain.
 - Mountain View Finders** Take in the history of the White River National Forest and appreciate the views.
 - Animal Abilities** Experience what it's like to have the abilities of local wildlife as you explore Vail Mountain hiking trails.
 - Visit the Nature Discovery Center to explore local ecology and find out about free daily nature talks and guided hikes.

- OTHER ACTIVITIES**
- Bike Clinics** Designed for our guests with less experience on a mountain bike, this tour includes some basic instruction and a guide to help you explore Vail Mountain.
- Guided Hiking** Guided hikes on Vail Mountain are offered daily during summer operations and customizable to your hiking preference.
- Mountain Top Tours** Experience a scenic tour across Vail Mountain in an open-air vehicle.
- Mini Golf** putt-putt fun at the base of Lionshead.
- View the Epic Discovery map or vail.com for more information** about activity requirements and restrictions. Visit vail.com or the Lionshead/ Vail Village ticket offices to get your activity pass today!

- EVENING MOUNTAINTOP MUSIC**
- Vail Mountain comes alive with the sound of music this summer with the return of the resort's Friday Afternoon Club (FAC) and Saturday Sundown Series at Eagle's Nest. Guests and locals alike celebrate the weekend with free live music and activities, food and drink specials, and the best views and sunsets in the valley.
- \$24 Twilight Ticket** after 5pm or \$30 with \$10 credit
16/17 season pass holders ride FREE
- Friday Afternoon Club (FAC):** 5pm every Friday throughout the summer July 1–Sept. 2, weather permitting
- Saturday Sundown Series:** 4pm every Saturday, beginning July 2–Sept. 3, weather permitting.
- Please call 970.SKI.VAIL (754.8245) for information.

- MOUNTAINTOP WEDDINGS**
- Imagine a mountaintop wedding at Vail's iconic wedding deck with Mount of the Holy Cross in the background, followed by a reception at one of Vail's select on-mountain restaurants. Our dedicated Group Sales & Services team will be there every step of the way.
- 866.231.8245 or email vailgroups@vailresorts.com.

DINE ON VAIL MOUNTAIN

ASK ABOUT A LIFT AND LUNCH VOUCHER
Make the most of your time on the mountain. Add a lift and lunch voucher for \$10 and get a \$15 food credit when you purchase a lift ticket or activity pass.



- Game Creek Restaurant (C1)**
Take a scenic gondola ride from Lionshead and shuttle tour from the top of the Eagle Bahn Gondola for a unique fine-dining experience in a European chalet, nestled in the wildflower-filled meadow of Game Creek Bowl. Featuring distinctive American cuisine, an extensive wine list and superior service.
- Summer après: drinks and appetizers on the sunny deck beginning at 5:30pm Thursday – Saturday. \$8 specials daily.
 - Serving dinner 5:30pm – 8:30pm Thursday – Saturday. Includes price of a Twilight ticket for advanced reservations.
 - Serving Sunday brunch 11am – 2pm. Includes a daily lift ticket per adult brunch purchase.

June 19 – Sept. 4

Reservations recommended. Walk-ins based on availability.

Please call 970.754.4275 for information and reservations.



The 10th (B2)
The 10th is Vail's premier fine-dining restaurant, located atop Gondola One at Mid-Vail. Enjoy updated classics with a quintessential mountain feel on the patio overlooking Vail Mountain's summer blooms, or in the sophisticated bar lounge. The 10th is simply: Modern. Alpine. Inspired.

Serving lunch June 24 – Sept. 4
11am – 3pm, Friday – Sunday

Please call 970.754.1010 for information and reservations.



- Bistro Fourteen (D2)**
Bistro Fourteen is a convenient, family-friendly, full-service restaurant located at the top of Eagle's Nest, with a casual-upscale lunch and dinner menu featuring salads, sandwiches, entrees and a wide selection of microbrews.
Serving lunch daily, June 13 – Sept. 5, 11am – 3pm
Serving dinner, June 23 – Sept. 3, 3pm – 8:30pm, Friday – Saturday
Please call 970.754.4530 for information.

- Sarge's Mid-Vail (B2)** Conveniently located at Mid-Vail at the top of Gondola One, Sarge's offers a unique outdoor mountain BBQ experience.
- Serving lunch daily, June 10 – Sept. 4, 11am – 3pm
Serving lunch weekends only, June 3 – 5, and Sept. 9 – Oct. 2, 11am – 3pm
- Talon's Deck Outdoor Grill (D2)** Relax on Vail's largest deck at the top of the Eagle Bahn Gondola and bask in the spectacular views of the Gore Range and Mount of the Holy Cross while enjoying fresh, delicious smoked barbecue at 10,350 ft.
- Serving lunch daily, June 10 – Sept. 5, 11am – 5pm
(Thursday and Friday, 11am – 8pm)
Weekends only, June 3 – 5, and Sept. 9 – Oct. 2, 11am – 4pm

*20% gratuity added to bill upon redemption of voucher credit at Bistro Fourteen, Game Creek Restaurant or The 10th.

- MOUNTAIN BIKING**
- Helmets and sturdy shoes with good tread are recommended at all times. Child carriers or tow-behind bikes are not permitted and all bikes must have two working brakes. All loose clothing, bags or packs should be firmly secured so they do not interfere with the bicycle's moving parts.
- Mountain bikers must always yield to other non-motorized trail users. Should you encounter hikers on any trail, you must yield the right-of-way. Ride on designated trails only and obey all posted signs and warnings. Failure to do so may result in lift ticket and/or pass revocation.

- Mountain Bike Responsibility Code**
- I will yield the right-of-way to other non-motorized trail users.
 - I will use caution when overtaking another and will make my presence known well in advance.
 - I will maintain control of my speed at all times.
 - I will stay on designated bike trails.
 - I will not disturb wildlife or livestock.
 - I will not litter.
 - I will respect public and private property.
 - I will always be self-sufficient.
 - I will not travel solo in remote areas.
 - I will observe the practice of minimum impact bicycling.
 - I will always wear a helmet whenever I ride.

STOP! READ THIS. FREERIDE SKILLS REQUIRED.

Freeride Terrain (trails marked in red on this trail map) may contain jumps, drops, wooden berms and other constructed or natural obstacles.

YOU ARE RESPONSIBLE for familiarizing yourself with the terrain and obeying all instructions, warnings and signs PRIOR to using Freeride Terrain. Freeride Terrain skill requires maintaining control on the ground and in the air. Freeride Terrain has designations for size. Start small and work your way up. Designations are relative to these bike trails.

Green  Blue  Black 

- SAFETY INFORMATION**
- IN CASE OF AN ACCIDENT OR IF YOU GET LOST :** Call 970.754.9111 from a cell phone. Wait for someone to answer and do not hang up until all pertinent information has been gathered.
- Fire Danger** Smoking is prohibited on lifts and is only allowed in designated smoking areas. Report fires immediately via cell by calling 970.754.3049.
- Sun Protection** With every 3,000' increase in altitude, UV levels rise by 10% -12%. We recommend Smith Optics eye protection and Supergoop! Broad Spectrum suncare products to ensure protection from UV rays.
- Protect your Purchase** Your ticket or pass is non-transferable and may not be resold or used by anyone other than the person to whom it was issued. Report lost or stolen passes to resort staff or law enforcement immediately. Resort staff may ask you to show your pass or ticket at any time. Failure to show a valid pass or ticket or engaging in fraudulent behavior of any kind may result in loss of resort privileges or criminal prosecution.
- Marijuana Consumption** It is illegal to consume marijuana in public and is not permitted on any Resort property.
- Aerial Drones** Recreational drone use by any guest or member of the public, for any reason, is not permitted on or over any Vail Resorts property.
- Lightning and Thunderstorms** Afternoon thunderstorms are common in the mountains. Take proper precautions when you see or hear a storm developing: Seek shelter, keep off ridgelines, and stay clear of chairlift houses, lift towers, power lines, open spaces, lone trees and signposts. Lifts may close on occasion, causing delays.
- High-Altitude Environment** If you live at a lower elevation, you may tire more easily. Take it easy at first, plan short trips until you are acclimated and drink plenty of water. Some visitors may experience symptoms associated with Vail's high altitude. Symptoms may include headaches, nausea, and dizziness, loss of appetite, restless sleep, coughing and difficulty in breathing. If symptoms persist or if you have a concern about your health, you should seek medical attention.
- Adequate Clothing** Be aware, mountain weather changes quickly and there is usually at least a 10 degree temperature difference from the bottom to the top of the lifts. Bring a raincoat and consider a sweater or fleece.
- Lift Safety** Under Colorado law, you cannot board a lift unless you have sufficient physical dexterity, ability and knowledge to negotiate or to use such lift safely or until you have asked for and received information sufficient to enable you to use the lift safely. You may not use a lift when under the influence of drugs or alcohol. Please lower the bar when riding lifts.
- Weather and Terrain YOU ASSUME THE RISK** of unpredictable weather, as well as rugged, uneven, irregular and slippery conditions.
- Multi-Use** Be aware that trails and roads on Vail Mountain are used for many purposes during the summer. Mountain bikes, hikers, motorized vehicles, construction equipment and others may be encountered at any time.
- Construction Warning** You may encounter construction equipment, maintenance vehicles or other heavy machinery at any time. Always be cautious and obey posted signs and warnings.
- Wildlife** Do not litter or feed wildlife. Hikers rarely encounter bears but, if you do, please remain calm and back away slowly. Vail asks that everyone is cautious and respectful of wildlife.

- SUMMER TICKETS**
- Visit vail.com for DAILY LIFT TICKET PRICING or visit the Vail Village or Lionshead ticket office.**
- Summer Ticket Office Hours:** Ticket offices open 30 minutes prior to gondola operations. To purchase gondola tickets or for information about activities on Vail Mountain, stop into a Summer Ticket Office in Lionshead or Vail Village.
- Lift & Lunch Package** Make the most of your time on the mountain. Add a lift and lunch voucher for \$10 and get a \$15 food credit when you purchase a lift ticket or activity pass.
- Free-Ride Unlimited Pass** Five-resort mountain bike season pass offers a variety of terrain, spanning three states; Vail and Keystone in Colorado, Northstar and Kirkwood in California and Park City in Utah. \$369 for season pass holders, \$389 for non-season pass holders. Ask about other summer bike pass options.


Ticket Rates	12 & UNDER	ADULT	SENIOR*
Week scenic lift pass**	\$43	\$85	\$73
Week bike pass**	\$58	\$100	\$88
Daily scenic lift pass	\$17	\$34	\$29
Daily bike pass	\$23	\$40	\$35

* Senior over the age of 65 and active military.
**Valid for 7 days of use in a 7-day time frame. Biking and hiking activities availability based on construction and mountain conditions. Please check with the Ticket Offices or call 970.SKI.VAIL (754.8245) for daily operations. Includes all-day unlimited rides. All lift-transported mountain bikers must sign a liability and code of use agreement prior to use at tickets sales location. Anyone under 18 years must have a parent/guardian sign release.

- GUIDED HIKING AND BIKING CLINICS/PASSES**
- Bike Clinics** Designed for our guests with less experience on a mountain bike, this tour includes some basic instruction and a guide to help you explore Vail Mountain.
- Guided Hiking** Designed for guests with all experience levels on a mountain bike, this tour includes riding instruction and a guide to help you explore Vail Mountain.
- Vail Mountain Hiking Center (D5)** Located in Lionshead at the base of the Eagle Bahn Gondola, meet with an expert on Vail Mountain hiking trails and pick up any items you may need for your trip up the mountain. 970.SKI.HIKE (754.4453)

- VAIL SPORTS**
- Vail Sports (C5) (D5) Vail Resorts Retail is a full-service bike shop for the entire family. Numerous mountainside locations offer the best in bike rentals including full-suspension, junior, comfort, and road bikes. Vail Sports also offers premier bike tours on Vail Pass with multiple trips daily. Lionshead Village and Vail Village: 970.476.3600.

OUR COMMITMENT TO THE ENVIRONMENT

 EpicPromise harnesses the passion of Vail Resorts employees, guests and community members in creating a more promising future for generations to come through sustainable and community-minded efforts. Each year, Vail Resorts supports educational, environmental and other numerous programs. Learn more at epicpromise.com

CHARGE YOUR WIRELESS DEVICE

Complimentary charging stations for wireless devices are available at the following locations:

- Mid-Vail
- Tavern on the Square
- Mountain Plaza
- The 10th
- Eagle's Nest
- Sprint

THE OFFICIAL PARTNERS OF VAIL RESORTS



Audi
Official Vehicle



pepsi.
Official Soft Drink



BUD LIGHT
Official Beer



Sprint
Official Communications Provider



HH
Official Uniform



MARSHALLS
Official Card



NATURE VALLEY
Official Snack



Supergoop!
Official Suncare



GoPro
Official Camera



Hertz
Official Rental Car



Vapor
Official Footwear



Starbucks
Official Coffee



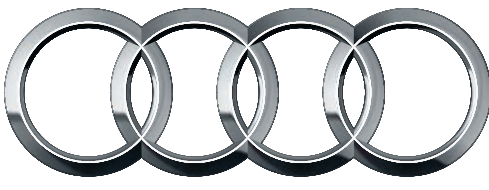
Amazon
Official Stock



SMITH
Official Helmet, Goggles and Sunglasses



WILLIAM HILL
Official Wine & Sparkling



Audi

Truth in Engineering

On-Mountain Emergency Numbers

Emergency Services 970.754.9111
Vail Security 970.754.3049

Adventure Ridge/Epic Discovery 970.SKI.VAIL (754.8245)
Bistro Fourteen Reservations 970.754.4530
Game Creek Restaurant Reservations 970.754.4275
The 10th Restaurant Reservations 970.754.1010
Lost & Found vail.com/lostandfound | 970.754.3059
Information & Activity Reservation Line 970.SKI.VAIL (754.8245)

Information & Activity Reservation Line 970.SKI.VAIL (754.8245)
down the Vail Valley. Open daily, 9am – 4pm, June 3 – October 2
Stop in and learn more about activities on Vail Mountain and up and in The Arrabelle at Vail Square, A RockResort, in Lionshead Village.
The Vail Mountain Information Center is located next to Starbucks

MOUNTAIN INFORMATION / LOST AND FOUND

SUMMER 2016 HIKING AND BIKING TRAIL GUIDE



 **VAIL** Like nothing on earth.™

SUMMER SCHEDULE

JUNE

S	M	T	W	TH	F	S
			1	2	3	4
5	6	7	8	9	10	11
12	13	14	15	16	17	18
19	20	21	22	23	24	25
26	27	28	29	30		

JULY

S	M	T	W	TH	F	S
					1	2
3	4	5	6	7	8	9
10	11	12	13	14	15	16
17	18	19	20	21	22	23
24	25	26	27	28	29	30
31						

AUGUST

S	M	T	W	TH	F	S
	1	2	3	4	5	6
7	8	9	10	11	12	13
14	15	16	17	18	19	20
21	22	23	24	25	26	27
28	29	30	31			

SEPTEMBER

S	M	T	W	TH	F	S
				1	2	3
4	5	6	7	8	9	10
11	12	13	14	15	16	17
18	19	20	21	22	23	24
25	26	27	28	29	30	

OCTOBER

S	M	T	W	TH	F	S
						1
2	3	4	5	6	7	8

EARLY SEASON SCHEDULE

Eagle Bahn Gondola: 9:30am–6pm
June 10–22
Gondola One: 9:30am–4pm
June 3–5, 10–22

DAYTIME SCHEDULE

Eagle Bahn Gondola: 9:30am–6pm
Gondola One: 9:30am–4pm
June 26–Sept. 4, Sunday–Wednesday

DAYTIME AND EVENING SCHEDULE

Eagle Bahn Gondola: 9:30am–9pm
Gondola One: 9:30am–4pm
June 23–Sept. 4, Thursday–Saturday

FALL SCHEDULE

Eagle Bahn Gondola: 9:30am–6pm
Gondola One: 9:30am–4pm
Sept. 5 and Sept. 9–Oct. 2, Friday–Sunday

NOT IN OPERATION

BIKES ON GONDOLA
Eagle Bahn Gondola until 6pm
Gondola One until 4pm

Calendar colors coordinate with operating schedule. All times subject to change.

THE BEST WAY TO SKI VAIL

epic PASS™

SKI AS MUCH AS YOU WANT, WHENEVER YOU WANT.

LIMITED TIME ONLY

CHOOSE YOUR PERFECT PASS AT EPICPASS.COM

© 2016 Vail Resorts Management Company. Trademarks are the property of their respective owners.