



Whistler

SUMMER 2017 VACATION GUIDE



p: Robin O'Neill





Peaks, creeks and
all the adventures
in between.



p. Tourism Whistler/Mike Cigne





THE HIGHPOINT OF SUMMER IN BC

Take two mountains. Link them with the Guinness World Record-breaking PEAK 2 PEAK Gondola at the top and the bustling cobblestoned village of Whistler at the base. Welcome to BC's most iconic destination. Home of the PEAK 2 PEAK 360 Experience.

A sample of what awaits:

- 360 degree views on BC's rooftop
- Lakes and beaches
- Over 40 kilometres of Valley Trail to walk or bike
- The Whistler Mountain Bike Park
- Wild black bear watching tours
- Ziplining through ancient coastal rainforest
- Retail therapy and patio dining
- Non-stop festivals and events
- And so much more

Just 90 minutes from Vancouver, Whistler is a pinnacle summer experience. With all there is to do, you'll want to extend your stay!

SUMMER LODGING SAVINGS

save
up to **30% OFF**

*Advertised percentage savings refers to savings on lodging based on 3 nights, and is available at participating properties only. Other deals and packages available, call or check online for full details.



Outer Space. Right here on earth.



THE PEAK 2 PEAK 360 EXPERIENCE

Transport yourself to an otherworldly destination aboard the Guinness World Record-breaking PEAK 2 PEAK Gondola, then set out on a 360° experience. Two mountains, 50+ km of hiking trails, vistas that overload the senses, free and custom guided tours in every direction, and an ever changing landscape from early-summer snow walls to blooming wildflowers to ancient glaciers. The PEAK 2 PEAK 360 Experience: your launch pad to our Outer Spaces.

Included with your ticket or pass:

- PEAK 2 PEAK Gondola
- Lift access on any of 4 open-air chairlifts and 2 gondolas
- 2 alpine zones: Top of the World Summit and 7th Heaven
- Black bear and wildlife viewing
- **NEW** Blackcomb Ascent Trails
- 50+ km of hiking/running trails
- PEAK 2 PEAK Viewing Gallery
- Samsung Alpine Theatre
- **NEW** Roundhouse Lodge cantilevered deck
- Changing events and activities, all summer long



PEAK 2 PEAK 360 TICKET

\$53.95* + tax

KIDS 6 &
UNDER VISIT
FOR FREE

PURCHASE YOURS 2+ DAYS IN ADVANCE TO SAVE

PEAK 2 PEAK 360 SEASON PASS

\$79.95* + tax

2016.17 & 2017.18
WINTER PASS
HOLDERS VISIT
FOR FREE

* Some restrictions apply. \$53.95 day ticket rate and \$79.95 season pass rate based on Adult, Regular season rate when booked 2+ days in advance. Walk-up Adult Regular season rate is \$58.95 for a day ticket and \$99.95 for a season pass. Senior, youth and child rates available at whistlerblackcomb.com. Offer valid summer 2017 and cannot be combined with any other offer.

Why upgrade to a 360 Season Pass?

- Unlimited access to the PEAK 2 PEAK 360 Experience, all summer long
- Additional pass perks and discounts such as 20% off select retail stores, food & beverage locations, Bike Park programs, valley trail bike rentals, etc.
- Exclusive passholder lodging offers, and more

Expérience distinctive



Signature Experience



More like the
main attraction
than a main street.



p: Tourism Whistler/Mike Crane





OPEN AIR TOWN SQUARE

With its endless array of shops, cafés and bars, parks and outdoor artworks, restaurants and legendary après nightlife, Whistler Village is a destination unto itself.

One part quaint mountain village, one part international cultural mecca, Whistler's energy and style is magnetic. Be drawn in by the revolving cast of free outdoor concerts and headline making festivals. Ride the trendlines with name-brand shopping at stores like Roots, Aritzia, Salomon and lululemon athletica. Whistler's culinary scene is as big as your appetite with over 200 restaurants and bars to choose from like Merlin's, GLC, Sushi Village, Earls, or for the truly indulgent, Araxi or Bearfoot Bistro. It's a pedestrian-only wonderland that never fails to impress.



TOP 5

Adventure Activities



THE PEAK 2 PEAK 360 EXPERIENCE

Feel the rush as you glide across British Columbia's rooftop aboard the longest and highest lift in the world with incomparable views of towering volcanic peaks and ancient glaciers. Enjoy scenic hiking trails, wildlife viewing and interpretive displays, then cap your day with a mountaintop dinner on the Roundhouse patio. **Day ticket starting from \$54 when purchased 2+ days in advance.**



WHISTLER MOUNTAIN BIKE PARK

Every level of rider will feel spoiled at the world's No. 1 lift-accessed downhill bike park. With the most terrain of any bike park in North America, including over 70 expertly-crafted trails spread across 4,900 vertical feet, it's an adrenaline-filled experience you don't want to miss.

Starting from \$57 when purchased 2+ days in advance.



ZIPTREK ECOTOURS

Treat yourself to the ultimate zipline experience, including The Sasquatch™ zipline - the longest in North America at a staggering 2km+ (7,000ft). Fly high over the Fitzsimmons Valley on your choice of four breathtaking tours that combine unforgettable ecological exploration with ultra-cool high-wire adventure!

Starting from \$84 (Bear Tour non-peak time)



ATV AND UTV TOURS

From adventures for beginners to explorations for experts, let our experienced guides take you on a magical voyage of discovery through Whistler's stunning backcountry on easy-to-ride ATVs or side-by-side UTVs. **Starting from \$129**



RAFTING

Whether you're a first timer or a confirmed thrill seeker, you'll never forget the exhilaration of flying down the rivers and rapids of Whistler, soaking up the spray on these amazing water adventures. **Starting from \$87**

p: Tourism Whistler/Mike Crane

These Top Five lists are filled with our favourite activities and attractions to help you choose what to do in our mountain paradise.

TOP 5

Family Activities

MOUNTAIN TOP DINING SERIES

It's a unique experience the whole family will love: a mouthwatering buffet dinner with live entertainment and endless views from 6,000ft. **Friday-Sunday evenings, starting from \$80 for adults, \$39 child (7-12yrs) includes PEAK 2 PEAK Experience**



FAMILY BIKING

No matter what your age or energy level, everyone will love exploring Whistler's 40+ km of winding, paved trails on our comfortable recreational bikes. If you're feeling the need for speed, head over to the Bike Park and challenge yourself on its 70 expertly-crafted downhill trails.



FAMILY ADVENTURE ZONE presented by Nintendo®

There's no end to the thrills that young fun seekers will find at the Zone. Slide behind the controls of a fantastic Hot Wheelz Electric Go Cart. Experience 25-foot sky leaps on our Kiss The Sky Bungy Trampoline. Feel the excitement of heading down the mountain on our famous Westcoaster Slide. Plus so much more!



RIVER OF GOLDEN DREAMS CANOE TRIP

Leave your other world behind as you glide across Alta Lake, along the winding river and through narrow passages of flowing lilies. Voted a Whistler must-do activity. **Starting from \$109 for adults, \$39 for Youth (6-12yrs), under 6 are FREE.**



SQUAMISH LIL'WAT CULTURAL CENTRE

The whole family will enjoy this colourful celebration of the joint history of the Squamish and Lil'wat Nations. With unique performances, fascinating tours, and native crafts, this cultural experience will leave an indelible impression on everyone. **Adult \$18, Child (6-12yrs) \$5**



TOP 5

Luxury Activities



SCANDINAVE SPA

Experience the lap of luxury with spa packages to relax your muscles, soothe your skin and calm your mind. With 17 massage rooms, eucalyptus steam baths, Finnish sauna, hot and cold plunge pools and a yoga studio, this is the break you deserve. **Starting from \$62 (Scandinavian Baths)**



WHISTLER TASTING TOURS

You don't have to be a "foodie" to delight in this 5-restaurant gastronomic journey through Whistler Village to sample the best of west coast cuisine – all in one night. Tours available to suit every palate, from upscale to classic and casual. **Starting from \$95 (Hidden Gems Tour)**



p: Tourism Whistler/Justa Jeskova

GOLF

Welcome to golf heaven! With immaculate conditions, stunning views and magnificent mountain terrain, it's no wonder Whistler's 4 championship courses are the darlings of reviewers everywhere and ranked in Golf Digest's "Top 20 Golf Resorts in the World".



p: Tourism Whistler/Justa Jeskova

AUDIAN ART MUSEUM

An iconic 55,000 sq/ft museum containing a permanent collection of 19th century Northwest Coast masks, Emily Carr collections, and works by some of Canada's most celebrated artists. Plus special exhibitions encompassing a variety of mediums, themes, artists and time periods.



WHISTLER HELICOPTER TOURS

Experience the true meaning of "sky's the limit" on an awe-inspiring heli tour. Get a bird's eye view of Black Tusk's volcanic beauty, discover the thrill of glacier walks, and soak up the jaw-dropping views of hidden waterfalls and glacier-fed lakes. **Starting from \$170**

TOP 5

Free Activities



LAKES & BEACHES

Head out into the sun and discover Whistler's gorgeous lakes, sandy beaches, swim docks, grassy parks, kids play areas, BBQs and concession stands. Perfect all-day entertainment for the entire family, or a great way to just relax and unwind.



VALLEY TRAIL

For a delightful change of pace, head out on two wheels along 40+ km of winding, paved trails with inspiring views of mountain landscape, lush forests and pristine lakes. Or gear down and take a leisurely stroll along Whistler's gorgeous Valley Trail.



WHISTLER FARMERS' MARKET

Hosted at The Upper Village Market every Sunday and Wednesday from June through October, this fun-filled family event features live music, local produce, cooking demos by local chefs, face painting and much more.



VILLAGE STROLL

It's easy to see why our vibrant, pedestrian-only village is the envy of resorts the world over. With over 200 shops, gourmet cuisine, sun-soaked bistro patios, and a renowned cosmopolitan atmosphere, there's a lot to take in.



EVENTS AND CONCERTS

Get ready for an impressive (and mostly free!) collection of world-class events, all summer long. From rockin' music concerts and mountain bike festivals to our "Whistler Presents" outdoor concert series in Whistler Olympic Plaza and annual "mudder" competitions, there's always something to get into.



p. Tourism Whistler/Mike Crane

Calendar of Events

Get the latest details at whistlerblackcomb.com/events

GO FEST – May 19-22

Celebrate the Victoria Day Long Weekend outside enjoying concerts, car shows, street entertainment, a farmer's market, and so much more.

THINKBIKE WHISTLER – June 1-4

Test ride brand new bikes on Whistler's trails and see how the latest technology stands up to the world famous terrain.

THE NORTH FACE WHISTLER HALF MARATHON – June 3

From a Kids Run to a Half Marathon, there are distances for all ability levels. Cheer on or join the race with all new courses for 2017!

TOUGH MUDDER – June 17-18

This epic weekend challenges teams of family and friends to military style courses with a focus on camaraderie. Tough Mudder, Tough Mudder Half and new for 2017, the overnight endurance event Canada's Toughest Mudder.

CANADA DAY – JULY 1

Celebrate Canada's 150th birthday with street entertainment, special events and free concerts - it's a party no matter where you're from.

VANCOUVER SYMPHONY ORCHESTRA CONCERT – July 1-2

Two days of classical music played in the open air by a full orchestra, surrounded by breathtaking mountains. A delight for all ages.

WHISTLER CHILDREN'S FESTIVAL – July 7-9

Hands-on art workshops, crafts, theatre, multi-media, dance, music and magical performances come to Whistler Olympic Plaza. Perfect for the whole family.

PEMBERTON MUSIC FESTIVAL – July 13-16

Four epic days of electrifying performances and massive dance parties underneath majestic Mt. Currie all add up to the best weekend of your life.

SUBARU IRONMAN® CANADA – July 30

Watch 2,000 of the world's pre-eminent triathletes, from the thrilling start of the swim in Alta Lake to the triumphant finish of the run in Whistler Village.

WANDERLUST WHISTLER – Aug 3-6

Drawing the world's leading yoga teachers, top musical acts, renowned speakers, top chefs and winemakers, Wanderlust Whistler is a must.

CANADIAN NATIONAL BBQ CHAMPIONSHIPS – July 27-30

Get ready to lick your fingers and tap your toes as master grillers battle at the Bulleit Bourbon Canadian BBQ Championships. A treat for all the senses.

CRANKWORX WHISTLER – August 11-20

Race, ride or watch the spectacle unfold. Downhill, enduro, trials, whip-offs, music, art... this world-famous, freeride mountain bike festival has it all.

WHISTLER GRANFONDO ("THE BIG RIDE") – September 9

Join or cheer from the sidelines at the epic 8th Annual 122km bike race from Vancouver to Whistler along the Sea-to-Sky Hwy.

WHISTLER VILLAGE BEER FESTIVAL – September 13-17

Sample 200+ beers from over 80 breweries at one of Canada's best beer events. Seminars, unique cask nights, food pairing dinners and great parties.

Whistler Accommodations

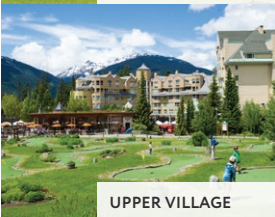
The Resort is split into a few distinct areas, each with its own advantages and personality.



WHISTLER VILLAGE



VILLAGE NORTH



UPPER VILLAGE



CREEKSIDE



WHISTLER VALLEY



PEMBERTON

Main Village

The heart of the resort, the pedestrian-only Village is filled with restaurants, shops and galleries. Best of all, you'll be just steps from the gondolas and all the sightseeing and hiking they make possible.

Village North

This area is centred around a market plaza, yet is still an easy stroll to the Village. It's also home to the new Whistler Olympic Plaza, an area that hosts concerts and events.

Upper Village

Located at the base of Blackcomb, this area boasts a wonderful sense of alpine seclusion just steps from the Village and Lost Lake. Also home to the weekly Farmers' Market.

Creekside

This charming, laid back, family-friendly area is a convenient alternative to the main Village (just a 5-minute drive away). Creekside has its own shops and restaurants, too.

Whistler Valley

These accommodations are just a short drive from the main Village and include the areas of Nicklaus North, Blueberry Hill and Alpine Meadows. They range from rustic cabins to brand new, ultra-luxury chalets.

Outside Whistler

Squamish and Pemberton are thriving towns just outside Whistler. Both offer a host of outdoor activities and oodles of small town charm.

See Village Map on page 28.

WHISTLER PREMIER RESORTS



Picture This: The Ultimate Mountain Getaway.

A vacation framed by breathtaking views and seemingly endless trails, perfect for exploring amidst the summer splendor of Whistler. An unforgettable year-round escape awaits you right in the heart of British Columbia. Renew your spirit, experience Whistler's unique culture, relax in sumptuous accommodations, and relish a family destination second to none.

Blackcomb Lodge ★★★★★

→ Located in the heart of Whistler Village

Le Chamois ★★★★★

→ Steps away from the Whistler Farmer's Market

Horstman House ★★★★★

→ Your Family Home Away from Home

Lost Lake Lodge ★★★★★

→ The Hidden Jewel at the Edge of Nature

Whistler Premier Condos

→ Fully self-contained condos through Whistler

Montebello ★★★★★

→ Luxury townhouses with private hot tubs

starting from **\$109**/night



All rates quoted in CAD funds. Room rate is per unit per night, based on 2 people, subject to availability and may change at anytime without notice. Taxes and fees are extra. Minimum night stays and/or other restrictions may apply. Packages and other promotions available.

THE WESTIN RESORT & SPA, WHISTLER



Embrace Well-Being in an Irresistible Location.

The Westin Resort & Spa, Whistler is perfectly situated slopeside on Whistler Mountain in the heart of the village and steps from world-renowned recreation.

Each residentially-designed suite features a welcoming fireplace, kitchen, soaker tub and Westin's signature "Heavenly Bed®".

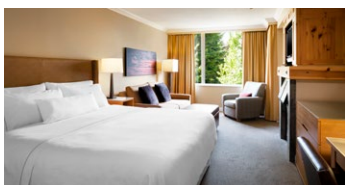
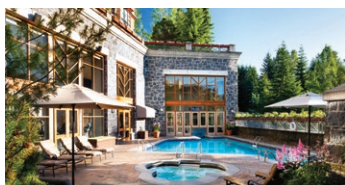
This "dog-friendly" hotel also offers bike and golf club storage, indoor/ outdoor pool, fitness centre and Avello Spa.

Featuring Whistler's best patio, the Grill & Vine restaurant showcases fresh, regionally-sourced ingredients and an extensive local wine selection.

Discover a better you with Westin.

- 4-Diamond, Full Service Hotel
- Studio, one & two bedroom suites
- Complimentary Wifi in the lobby, restaurant and select suites
- Indoor/outdoor pool
- Grill & Vine Restaurant and FireRock Lounge
- Retail Shops including CAN SKI
- On-site bike rentals

starting from **\$239** /night



All rates quoted in CAD funds. Room rate is per unit per night, based on 2 people, subject to availability and may change at anytime without notice. Taxes and fees are extra. Minimum night stays and/or other restrictions may apply. Packages and other promotions available.

CRYSTAL LODGE & SUITES

★★★★



At the Centre of it All.

An unbeatable location in the centre of the Village, steps from Whistler Gondola. This is an ideal location for outdoor enthusiasts craving adventure and sophisticated dining, nightlife and shopping. After a day on the hills, leave your bike with the valet and take a dip in the heated outdoor pool or soak in the hot tub before a night out. You won't have to go far: the Village's best restaurants and shops are attached to the hotel.

Unparalleled on-site amenities

- Outdoor heated pool, hot tub, sauna & fitness centre
- Complimentary bike storage
- Complimentary wireless Internet
- 7 onsite restaurant/lounges including Wild Wood Pacific Bistro, Old Spaghetti Factory, Starbucks, Beacon Pub & Eatery, and Basalt Wine + Salumeria
- 20 of Whistler's best retail shops including lululemon athletica & Roots
- Pet friendly
- Spacious suites with full kitchens

Comfort & Value

The Crystal offers a variety of room options from newly renovated hotel rooms, deluxe studios, loft suites and the iconic, round luxurious two & three bedroom suites. Enjoy your stay "at the centre of it all."

starting from **\$128**/night



All rates quoted in CAD funds. Room rate is per unit per night, based on 2 people, subject to availability and may change at anytime without notice. Taxes and fees are extra. Minimum night stays and/or other restrictions may apply. Packages and other promotions available.

CASCADE LODGE HOTEL



Comfort at the Gateway to Whistler Village.

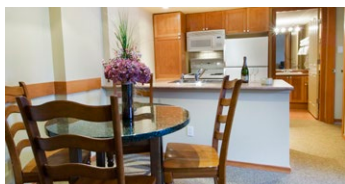
With its prime location within a few minutes' walk of the heart of the village, this property was built with your comfort and convenience in mind. Once you have dropped off your bags, head out our front doors and you will be in the perfect spot to begin exploring the Village Stroll and discovering its many charms.

During your stay, you will enjoy spacious suites equipped with air-conditioning and featuring beautiful forest or mountain views. Visit our beautifully landscaped inner courtyard and soak in our outdoor heated pool – one of the largest in Whistler - and two hot tubs.

With all suites featuring a kitchen (convenience or fully equipped), you will love the simplicity of picking up your groceries just steps away, and returning to make your own meals to enjoy in the comfort of your suite that feels like home.

- Complimentary wireless internet and local telephone calls
- High-definition flat-screen TV in all suites
- Private washer and dryer in some suites
- Fitness room with female and male sauna
- Complimentary secure bike storage
- Spectacular views of Whistler and Blackcomb Mountains

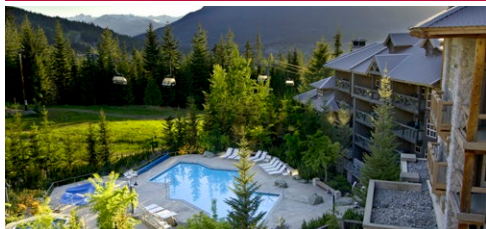
starting from **\$154** /night



All rates quoted in CAD funds. Room rate is per unit per night, based on 2 people, subject to availability and may change at anytime without notice. Taxes and fees are extra. Minimum night stays and/or other restrictions may apply. Packages and other promotions available.

COAST BLACKCOMB SUITES AT WHISTLER

★★★★



Refreshingly Local.

A spectacular lodge-style hotel nestled slope-side on Blackcomb Mountain, with hiking and biking trails at the door step and minutes from Whistler Village. After a day of play, relax in comfort with full kitchens, and private balcony in every suite. There's no better way to enjoy the vast beauty and good times at Whistler than in our unique on-the-mountain all-suite hotel. Pet friendly.

- Spacious studio, 1 & 2 bedroom suites
- Flat-screen TV & complimentary Wi-Fi
- Daily complimentary continental breakfast
- Heated outdoor pool, hot tubs & fitness centre
- Complimentary Whistler resort shuttle service to & from Whistler Village

starting from **\$182**/night

WHISTLER PEAK LODGE

★★★★



The Perfect Escape in the Heart of Whistler Village.

A boutique property nestled in the centre of Whistler Village's upscale restaurants, shops and galleries. Well-appointed and comfortable guestrooms with spacious, newly renovated, suites range from 400-820 square feet. Enjoy fully equipped kitchens and kitchenettes, updated bathrooms with jetted tubs and complimentary Wi-Fi. Wheelchair-accessible suites are available, plus on-site fitness centre and indoor hot tub.

- All-suite accommodations comprises of studio, 1 & 2 bedroom suites
- Steps from Whistler & Blackcomb Mountain Gondolas
- 24-hour front desk & overnight security, secured ski & bike storage
- Individual air conditioner/air purifier units

starting from **\$154**/night

All rates quoted in CAD funds. Room rate is per unit per night, based on 2 people, subject to availability and may change at anytime without notice. Taxes and fees are extra. Minimum night stays and/or other restrictions may apply. Packages and other promotions available.

PAN PACIFIC WHISTLER MOUNTAINSIDE

★★★★



All-suite at Whistler's best address.

Ideally located at the base of both mountain Gondolas, and fronting the pedestrian-only Skier's Plaza and village stroll, Pan Pacific Mountainside is the winner of Canada's Best Ski Hotel for the past 4 years in the World Ski Awards. This full-service, boutique hotel is your gateway to mountain adventures with 121 well-appointed suites.

- Spacious studio, 1 & 2 bedroom suites with full kitchens, fireplaces & balconies
- Outdoor heated saltwater pool & 2 hot tubs perched mountainside
- Complimentary valet bike/golf storage, in-resort shuttle service, Internet & local phone calls
- Dubh Linn Gate Irish Pub & Patio serves breakfast, lunch & dinner, with live music & a heated patio

starting from **\$172**/night

PAN PACIFIC WHISTLER VILLAGE CENTRE

★★★★★



All-suite accommodation with complimentary daily breakfast.

Pan Pacific Village Centre is an intimate, family-friendly oasis located in the heart of the Village stroll, yet only a five minute walk from the Gondolas. Enjoy the stunning mountain views from the sunny pool deck. Spa treatment rooms on-site. 2016 winner of the #1 Resort in Canada by Condé Nast Traveler Readers' Choice Awards. Pets are welcome.

- Complimentary daily continental breakfast buffet in the Pacific Bistro
- Complimentary Internet, local calls, in-resort shuttle & valet bike/golf storage
- 1, 2 & 3 bedroom suites with fully equipped kitchens & spacious living areas with fireplaces & balconies
- Outdoor heated saltwater pool, 2 hot tubs & sauna

starting from **\$182**/night

All rates quoted in CAD funds. Room rate is per unit per night, based on 2 people, subject to availability and may change at anytime without notice. Taxes and fees are extra. Minimum night stays and/or other restrictions may apply. Packages and other promotions available.

EXECUTIVE HOTELS AND RESORTS



European Charm in the Heart of Whistler Village.

- Unbeatable locations just steps from both Whistler & Blackcomb gondolas, restaurants & shopping
- Complimentary secured bike storage
- Year round outdoor heated pool, hot tub & fitness room accessible to all guests

Mountain Side Hotel by Executive ★★★★★

- Studios & loft accommodations
- Full kitchens, flat screen TVs & gas fireplaces

Executive Inn at Whistler Village ★★★★★

- Studios and chalet style lofts
- Kitchenettes, wood burning fireplaces & flat screen TVs

starting from **\$119**/night

PINNACLE HOTEL WHISTLER

★★★★★



All suite boutique hotel in the heart of the Village.

Fabulous location right in Whistler Village, this all suite hotel is perfect for your entire family. Find all the comforts of home, like full kitchens, flat-screen TVs, luxury jetted Jacuzzi tubs and heated outdoor pool. After an amazing day exploring, dine in our award-winning restaurants Quattro Restaurant and Alta Bistro.

- All-suite hotel, large spacious studios
- Flat-screen TV & wireless internet
- Full equipped kitchens
- Newly renovated washrooms
- In-room jetted Jacuzzi tub
- Heated outdoor pool & fitness centre

starting from **\$124**/night

All rates quoted in CAD funds. Room rate is per unit per night, based on 2 people, subject to availability and may change at anytime without notice. Taxes and fees are extra. Minimum night stays and/or other restrictions may apply. Packages and other promotions available.

FAIRMONT CHATEAU WHISTLER

★★★★★



Conde Nast Traveler 2016 Gold List

Whistler's legendary chateau, Fairmont Chateau Whistler is your ideal hub for memorable summer adventures. From the champion on-site golf course, spa and mountainside pool patio to AAA/CAA Four Diamond-Rated dining, Fairmont delivers an unforgettable experience. For travelers seeking the ultimate in luxury, the distinctive Fairmont Gold level offers elegant accommodation and continental breakfast in the private Fairmont Gold Lounge.

- Exclusive excursions led by Fairmont's Whistler Experience Guide
- Golf and mountain bike valet service
- Neighbouring Nintendo's Family Adventure Zone & Sunday Farmers' Markets

starting from **\$289**/night

LODGING OVATIONS



All-Suite, Lodging in Creekside, the quieter side of Whistler.

Located in Whistler Creekside, these condo-style hotels are the perfect home away from home for exploring all that Whistler has to offer.

Legends

★★★★★

The perfect launch point to the ultimate playground

Evolution

★★★★★

A modern, pet friendly take on mountain living

First Tracks Lodge

★★★★★

Luxury with an inspired location

Each property offers:

- 1-3 bedroom suites, full kitchens
- Outdoor pool, 2 hot tubs, fitness center & BBQ area
- Private balconies
- Complimentary wireless Internet
- Bike storage & underground parking

starting from **\$153**/night

All rates quoted in CAD funds. Room rate is per unit per night, based on 2 people, subject to availability and may change at anytime without notice. Taxes and fees are extra. Minimum night stays and/or other restrictions may apply. Packages and other promotions available.

TANTALUS RESORT LODGE

★★★



Unique Accommodation with a True Mountain Lodge Atmosphere.

Nestled on 6.5 acres with a superb Village location, Tantalus Resort Lodge features everything you need for the perfect summer escape.

- Outdoor pool
- 2 outdoor hot tubs
- Secure bike storage
- Bike tuning & washing station
- Tennis courts
- Sand volleyball court
- BBQ & picnic area
- Children's playground

starting from **\$149**/night

FOUR SEASONS RESORT AND RESIDENCES WHISTLER

★★★★★



Adventure - Designed by Nature.

Elegant rooms and suites combined with unparalleled service has made Four Seasons Resort and Residences Whistler Canada's only Forbes Five Star luxury resort.

All accommodations feature a gas-burning fireplace, along with deep-soaking Roman bath tubs and glass-enclosed rainfall showers.

After an adventure-filled day on the mountain, relax in The Spa and our outdoor pool and hot tubs.

Four Seasons Resort Whistler boasts extraordinary experiences along with complimentary daily wine tastings of British Columbia varietals, live music in the courtyard and more.

starting from **\$339**/night

All rates quoted in CAD funds. Room rate is per unit per night, based on 2 people, subject to availability and may change at anytime without notice. Taxes and fees are extra. Minimum night stays and/or other restrictions may apply. Packages and other promotions available.

HILTON WHISTLER RESORT & SPA

★★★★☆



The Whistler Experience at Your Doorstep.

Nestled conveniently beside the Whistler Gondola base, directly on the Village Stroll, the award-winning Hilton Whistler Resort & Spa radiates warmth and elegance throughout its finely appointed, spacious guest rooms and welcoming staff.

Enjoy a savoury selection of classic favourites and soak up the village vibe at the Cinnamon Bear Bar & Grille, or unwind after an invigorating day on the slopes at Taman Sari Royal Heritage Spa.

Whether you have a passion for adventure or relaxation, Hilton Whistler Resort & Spa's personalized service will ensure your next Whistler getaway creates memories that will last a lifetime.

starting from **\$249**/night

LISTEL HOTEL WHISTLER

★★★



At the Heart of Adventure.

Just steps from the mountains, and at the heart of Whistler Village, the Listel Hotel Whistler offers the perfect base for your alpine adventure.

Our friendly, knowledgeable staff are always on hand to answer questions, offer tips and advice on the area, and make sure your stay is comfortable and relaxed.

- Spacious guest rooms and suites
- Complimentary continental breakfast
- Complimentary bike valet service
- Complimentary WiFi
- Home to the award-winning Bearfoot Bistro & Vodka Ice Room
- 3 Green Key eco-rating

starting from **\$177**/night

All rates quoted in CAD funds. Room rate is per unit per night, based on 2 people, subject to availability and may change at anytime without notice. Taxes and fees are extra. Minimum night stays and/or other restrictions may apply. Packages and other promotions available.

ADARA ★★★★



Our personal approach.

The Adara strives to make you feel right at home. Wake up to a fresh cup of coffee or tea in the lobby and grab a breakfast bar to fuel your energy for the day. After exploring the mountain, rejoice at the smell of freshly baked cookies served every afternoon.

Say hello to our friendly resident dog Kate, while you relax in the two-story designer lobby. Speak to our experienced front desk team for help with anything you desire, from dinner reservations and lift tickets, to adventure tours, gear rental and much more. Great location!

starting from **\$209**/night

SUNDIAL BOUTIQUE HOTEL ★★★★



Luxury by the Lifts.

Located in the heart of Whistler Village, this boutique hotel offers deluxe one & two bedroom suites with full kitchens (some with their own hot tubs) just steps from both village gondolas.

starting from **\$169**/night

WHISTLER SUPERIOR PROPERTIES



Superior in Nature.

High quality, fully equipped accommodations with Village, Blackcomb and golf course locations! Amenities such as pools, private hot tubs and garages are available. Complimentary Internet access is provided in all properties.

starting from **\$99**/night

All rates quoted in CAD funds. Room rate is per unit per night, based on 2 people, subject to availability and may change at anytime without notice. Taxes and fees are extra. Minimum night stays and/or other restrictions may apply. Packages and other promotions available.

DELTA WHISTLER VILLAGE SUITES

★★★★☆



All-suite accommodations set the stage for a fantastic visit to Whistler Village.

Located in the heart of the Village just steps from boutiques, festivals, restaurants and spas. The well-appointed suites offer fully equipped kitchens, in-suite washer/dryer, balcony, air conditioning, fireplace and high speed internet access.

starting from **\$159**/night

NITA LAKE LODGE

★★★★☆



Exceptional. Intimate. Authentic.

Experience Whistler's only lakeside hotel. Featuring oversized suites, a full-service spa, complimentary wellness amenities and local cuisine, Nita Lake Lodge was recently named the as one of the top resorts in Canada by Condé Nast Traveler, and in the Top 25 Hotels in Canada by TripAdvisor®.

starting from **\$189**/night

WHISTLER PLATINUM



Your Whistler Home Away from Home.

- 1 to 6 bedroom vacation rentals
- 70 properties with private hot tubs
- 30 with pool access
- Complimentary wireless Internet
- Most with free parking

starting from **\$169**/night

AAVA HOTEL WHISTLER

★★★★



Basecamp for the Outdoor Adventurer!

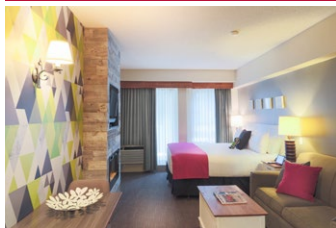
Explore Whistler with Aava! Enjoy FREE bike valet services and grab one of our GoPro Hero 5 Cams to capture the action. After an adventurous day, relax poolside and soak up the stunning mountain views!

starting from **\$124**/night

All rates quoted in CAD funds. Room rate is per unit per night, based on 2 people, subject to availability and may change at anytime without notice. Taxes and fees are extra. Minimum night stays and/or other restrictions may apply. Packages and other promotions available.

SUMMIT LODGE BOUTIQUE HOTEL

★★★★



A playful escape with a colourful twist on Pacific Northwest design.

- Award winning & quirky, we offer something different.
- Rooms feature a kitchenette, fireplace & balcony.
- Complimentary perks include wi-fi, bike rentals & outdoor pool/hot tub.
- The conveniences of home in the heart of Whistler.

starting from **\$189**/night

ACER VACATIONS



Affordable Family-Oriented Accommodations.

Greystone Lodge offers family oriented accommodations close to the Family Adventure Zone at the base of Blackcomb. Enjoy the heated outdoor pool, hot tubs, free underground parking and free WiFi.

starting from **\$139**/night

BLACKCOMB PEAKS ACCOMMODATIONS



Comfort, Convenience, Service.

1-4 bedroom condominiums and townhomes located close to the village, lakes, bike trails and golf courses. Featuring full kitchen, BBQ, HDTV, and free wifi, with pool, hot tubs and fitness centre available as amenities in some properties.

starting from **\$115**/night

WHISTLER RETREATS



The Peak of Your Adventure.

Spectacular Village and mountainside locations throughout Whistler. Fully equipped studios to 5-bedroom condos and chalets. Some properties include air conditioning, outdoor pools and hot tubs.

starting from **\$120**/night

All rates quoted in CAD funds. Room rate is per unit per night, based on 2 people, subject to availability and may change at anytime without notice. Taxes and fees are extra. Minimum night stays and/or other restrictions may apply. Packages and other promotions available.

WHISTLER VILLAGE INN + SUITES

★★★



The Perfect Mix of Value and Location.

Choose from hotel rooms, studios or spacious loft suites. Shops, restaurants, nightclubs and the Gondolas for Whistler and Blackcomb mountains are all less than a two-minute walk away.

starting from **\$129**/night

PEAK TO GREEN CONDOS AND TOWNHOUSES



Relaxing Getaway.

Great locations: Village, Upper Village and Creekside. Fully equipped 1 to 4-bedroom condos and townhouses that are close to all activities, with pools, hot tubs and more. For larger groups, we offer 30 units in the Wildwood Lodge.

starting from **\$119**/night

PEMBERTON VALLEY LODGE

★★★★



Where Mountain Adventure Meets Modern Comfort.

The all-suite Pemberton Valley Lodge, just 20 minutes north of Whistler, combines urban style with personal service. Enjoy amazing mountain views and recreational activities like horseback riding, golf and hiking. Pet-friendly.

starting from **\$184**/night

GROUPS BOOK IN A GROUP AND SAVE



A group retreat can spark old connections, build new ones and create lasting memories for all. If you're planning a trip for 20+ people, or require 10+ rooms, you can save big on lodging, activities, airfare and more! Let our experienced Group Sales Team take care of the details for a unique, custom-built and successful event.

For more information please call us at **1.877.944.4481**.

All rates quoted in CAD funds. Room rate is per unit per night, based on 2 people, subject to availability and may change at anytime without notice. Taxes and fees are extra. Minimum night stays and/or other restrictions may apply. Packages and other promotions available.

PACIFIC COACH



Relax...Enjoy the Journey.

Frequent, daily bus service between YVR Airport (YVR Whistler Skylynx) and Downtown Vancouver (WhistlerExpress) to/from Whistler including "door to door" service in the Village to hotels/condos. Free WiFi on-board. Relax.....enjoy the journey.

Adult (13+)
starting from **\$54** one way

Rate is quoted in CAD funds and is subject to availability at the time of booking and do not include any applicable taxes, fees or gratuity. Rates may change without notice and are valid from April 7 - December 14, 2017.

WHISTLER SHUTTLE



Fast, Flexible & Friendly.

Lowest price YVR to Whistler! Our flexible schedule gets you on the road to Whistler quickly. A large selection of pick up and drop off locations in Whistler means a true door to door service. We also serve Vancouver downtown. We like bikes!

Adult (13+)
starting from **\$54** one way

Rate is quoted in CAD funds and is subject to availability at the time of booking and do not include any applicable taxes, fees or gratuity. Rates may change without notice and are valid from April 18 - November 24, 2017.

STAR LIMOUSINE



A Premier Service Choice for Ground Transportation.

We offer chauffeur-driven sedans, limousines, SUVs, vans and luxury Limo Buses/Mini-Buses. This is the best way to enjoy the scenic Sea-to-Sky Highway. Our chauffeurs will get you from the airport to Whistler safely, comfortably and on time.

3-Passenger Luxury Sedan
starting from **\$413** one way

Rate is quoted in CAD funds and is valid May 1 - October 31, 2017. Rate is subject to availability at the time of booking, does not include applicable taxes and fees and may change without notice. 15% gratuity and parking fees are included in the price.

PEARL LIMOUSINE



Offering Luxury Transportation for Over Two Decades.

Relax and leave the driving to us in the safety of a luxury sedan, SUV, van, limousine, or SUV limo. Enjoy the splendour of British Columbia with complimentary sight-seeing commentary. Airport to Whistler and return for one low price.

3-Passenger Sedan
starting from **\$413** one way

Rate is quoted in CAD funds and is valid May 1 - October 31, 2017. Rate is subject to availability at the time of booking, does not include applicable taxes and fees and may change without notice. 15% gratuity and parking fees are included in the price.

JOURNEY UP THE Sea to Sky

The journey along the aptly-named Sea-to-Sky Highway between Whistler and Vancouver is one of the world's most spectacular drives.

Spend a day travelling along this incredible route and enjoy stops at these popular attractions:



- **Horseshoe Bay**
A waterfront village with galleries & patios. Try the fish n' chips.
- **BC Mining Museum**
Pan for gold, travel deep into a once-active copper mine & more.
- **Shannon Falls**
A must-see; thunderous, picturesque & easy to access.
- **The Stawamus Chief**
A popular, moderate, 2-3 hr hike with jaw-dropping views.
- **Squamish**
The Outdoor Recreation Capital of Canada, with hiking, rock climbing, kite surfing & more. A great place to stop for lunch on your way.
- **Alice Lake**
A provincial park boasting one of the warmest lakes in the area.
- **Tantalus Lookout**
A rest area with some of the most amazing views on the route.
- **Brandywine Falls**
A 70 m waterfall & park, with hiking, picnics & mountain biking.

AVIS® CAR RENTAL

Life is nonstop. We're here to keep you moving — your way.

Choose from a variety of vehicles including SUVs, enjoy the exclusive one-way rental program between Vancouver and Whistler and rent a Garmin® GPS unit*.

Intermediate Car
roundtrip
from **\$59** per
day



Rate is quoted in CAD funds. Rate is a daily rate not including taxes, valid from May 1 - June 30 & September 1 - October 31, 2017, minimum 2 day rental, subject to availability at the time of booking and may change without notice. Rate includes unlimited kilometers, concession reoccupancy fee, airport/facility surcharge and a ski rack (subject to availability). Additional fees and optional service such as Loss Damage Waiver and additional driver fee are extra. Renter must meet AVIS age, driver and credit requirements. Minimum age may vary by location. An additional day surcharge may apply for renters under 25 years. Other car types/ dates available, please inquire for details.

UPPER VILLAGE

- 1 Alpine Greens
- 2 Arrowhead Pointe
- 3 Aspens on Blackcomb
- 4 Blackcomb Greens
- 5 Cedar Hollow
- 6 Cedar Ridge
- 7 Coast Blackcomb Suites
- 8 Crystal Ridge
- 9 Fairmont Chateau Whistler
- 10 Forest Creek
- 11 Forest Trails
- 12 Four Seasons Resort Whistler
- 13 The Gables
- 14 Glacier Lodge
- 15 Gleneagles
- 16 Greystone Lodge
- 17 Horstman House
- 18 Le Chamois
- 19 Lost Lake Lodge
- 20 The Marquise
- 21 Mountain Star
- 22 Painted Cliff
- 23 Pinnacle Ridge
- 24 Powderhorn
- 25 Snowgoose
- 26 Snowy Creek
- 27 Stoneridge
- 28 Treeline
- 29 The Villas Foxglove
- 30 The Villas Snowberry
- 31 The Villas Wintergreen
- 32 Wildwood Lodge
- 33 The Woodrun
- 34 The Woods/The Woods Chalet

VILLAGE NORTH

- 35 The Alpenglow
- 36 Delta Whistler Village Suites
- 37 Fitzsimmons Walk
- 38 Glacier's Reach
- 39 Granite Court
- 40 Market Pavilion
- 41 Marketplace Lodge
- 42 Montebello
- 43 Stoney Creek - Lagoons
- 44 Stoney Creek - Northstar
- 45 Stoney Creek - Sunpath
- 46 Summit Lodge Boutique Hotel Whistler
- 47 Symphony
- 48 Tyndall Stone Lodge
- 49 Valhalla
- 50 Cascade Lodge
- 51 Whistler Town Plaza Suites
- 52 Pinnacle Hotel Whistler

WHISTLER VILLAGE

- 53 Aava Whistler Hotel
- 54 Adara Hotel
- 55 Listel Whistler Hotel
- 56 Blackcomb Lodge
- 57 Fitzsimmons A
- 58 Carleton Lodge
- 59 Crystal Lodge & Suites
- 60 Executive Inn at Whistler Village
- 61 Hilton Whistler Resort and Spa
- 62 Whistler Peak Lodge
- 63 Mountainside Lodge
- 64 Northern Lights
- 65 Pan Pacific Whistler Mountainside
- 66 Pan Pacific Whistler Village Centre
- 67 Rainbow Suites
- 68 Sundial Boutique Hotel
- 69 Tantalus Resort Lodge
- 70 Telemark
- 71 Westin Resort & Spa
- 72 Whistler Village Inn + Suites

WHISTLER CREEKSIDE

- 73 Evolution
- 74 First Tracks Lodge
- 75 Gondola Place
- 76 Lake Placid Lodge
- 77 Legends
- 78 Nita Lake Lodge
- 79 Powderview
- 80 Snowridge
- 81 Sundance
- 82 Taluswood - The Lookout
- 83 Taluswood - The Bluffs
- 84 Taluswood - The Ridge
- 85 Taluswood - The Heights







WIN A TRIP TO Whistler

360 Degrees of Whistler Contest

- 6 Nights Accommodation at The Fairmont Chateau Whistler
- 2 x PEAK 2 PEAK 360 Season Passes
- 2 x Mountain Top Dinner
- 2 x zipline tour with Ziptrek Ecotours
- 2 x Massages and Scandinavian Baths at ScandinaVe Spa
- 2 x Valley Bike Rental

View rules & regulations and enter to win:
www.whistlerblackcomb.com/experiencewhistler

*No purchase necessary. Contest open to legal residents of Canada (except Quebec) and United States of America. Enter online at www.whistlerblackcomb.com/experiencewhistler (the "Contest Website"). Contest starts May 1, 2017 and ends October 31, 2017. Winner must correctly answer a time-limited skill-testing question. There is one (1) prize available to be won consisting on a trip for two (2) people to Whistler, British Columbia for the summer 2018 season. The prize has an approximate value of two thousand six hundred and eighty dollars (\$2680 CAD). Full Contest Rules can be found at the Contest Website.

One-Stop Booking



Our Local Experts have stayed in the hotels, taken the transportation, participated in the activities and dined out at the restaurants. We also guarantee the lowest prices and if you find lower, we will beat it by 10% of the difference.



PRICE BEAT
- PROMISE -

Learn more at whistlerblackcomb.com/whybook

ENTERING CANADA

For passport and customs information, please visit our website:
whistlerblackcomb.com/entercanada

RATES

All rates quoted in CAD funds. Rates quoted herein are valid for the summer 2017 season and are subject to change with or without notice. All reservations are subject to availability at time of booking. Taxes and fees not included.

RESERVATION POLICY

A major credit card is required in order to confirm a reservation. Deposit, final payment and cancellation policies vary by providing company. For all vacation packages, final payment is due according to individual partner's policies. Please ask your reservation agent about specific policies pertaining to lift tickets, car rentals, etc. 1.888.858.4845 is a toll free number from anywhere in North America.

RESPONSIBILITY

Resort Reservations Whistler (RRW) shall not be responsible for lost, stolen or damaged luggage resulting from any consequence beyond its control including, but not limited to, weather, strikes or missed connections of flights due to flight time changes or delay caused by weather, mechanical difficulties or other. The client abandons any claim against RRW, its agents or employees for any reason resulting in delay, omission, negligence or other fault caused by the bus or air carrier, its agents or employees. RRW undertakes to supply the services and accommodations contained in this brochure. Should they not be available for any reason beyond the control of RRW, the company shall be responsible only for supplying services and accommodations of comparable quality. All travel arrangements are subject to change, with or without notice to the client. Images may not represent the property and room type advertised, and services listed may not be included in the price.

Where is Whistler?

Located in the Pacific time zone on the pristine West Coast of Canada, Whistler, BC is approximately 125 km (78 miles) north of Vancouver along the spectacular Sea-to-Sky Highway. Whether for a day trip or multi-day vacation, visitors can take this impressive 1.5-hour journey by car, bus, or even by helicopter or floatplane.



Distance to Whistler from:

- Vancouver, BC - Canada**
125 km (78 miles)
1.5 hours
- Calgary, AB - Canada**
1092 km (679 miles)
10.5 hours
- Bellingham, WA - USA**
210 km (130 miles)
3.5 hours
- Seattle, WA - USA**
338 km (210 miles)
4.5 hours
- Portland, OR - USA**
627 km (390 miles)
8 hours

LAST MINUTE HOTEL DEALS

COMING TO WHISTLER IN THE NEXT FEW WEEKS?

Last minute deals are the best way to save on lodging.

- Know the price, room type, location, and star rating
- Once booked, the property's name is revealed
- Only available online at whistlerblackcomb.com/lastminute

Resort Reservations Whistler
 #300-4445 Lougheed Highway
 Burnaby, BC, V5C 0E4
 Phone: 604.695.8700
 Toll free: 1.888.858.4845
 Global Toll free: + 800.4422.1122

